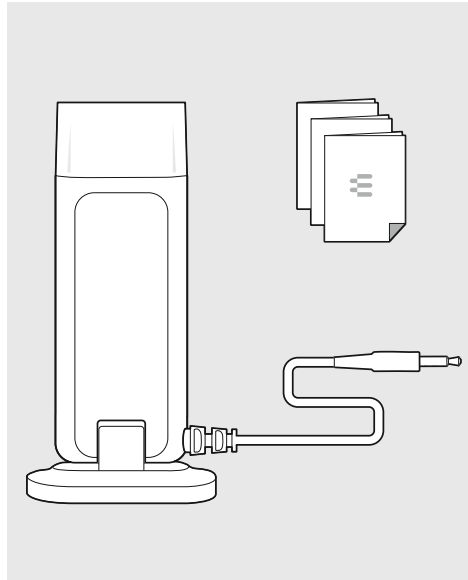


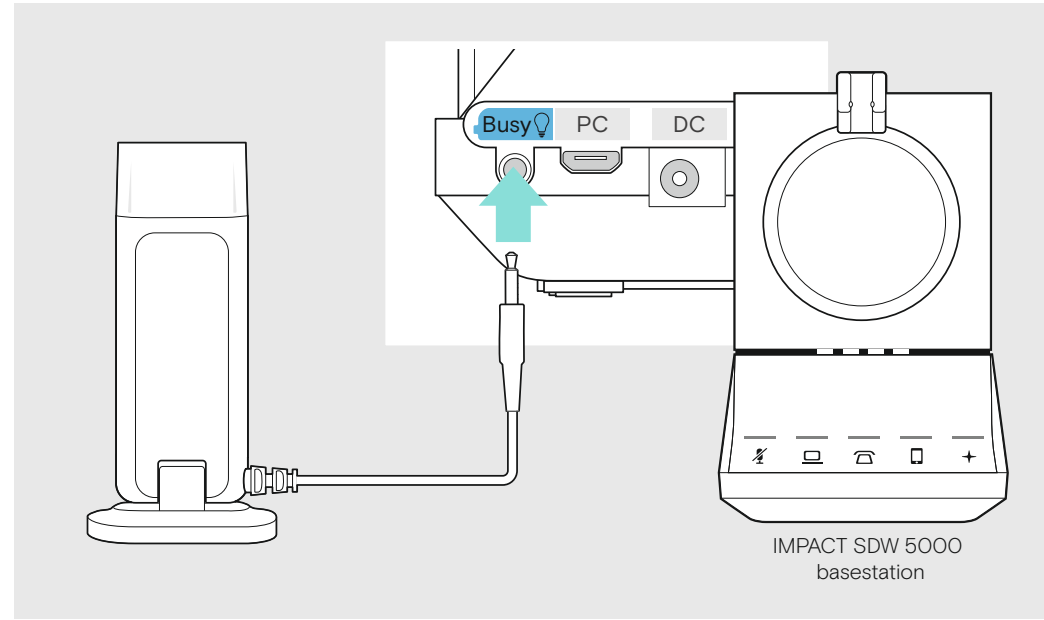
UI 10 BL
Busy light with 2.5 mm jack plug

- | | | |
|---------------------|------------------------|------------------------|
| EN Quick Guide | EL Γρήγορος οδηγός | RU Краткое руководство |
| DE Kurzanleitung | DA Kvikvejledning | ZH 快速入门指南 |
| FR Guide express | SV Snabbguide | TW 快速指南 |
| IT Guida rapida | FI Pikaopas | TR Hızlı Kılavuz |
| ES Guía rápida | PL Skrócona instrukcja | JA クイックガイド |
| PT Guia Rápido | ID Panduan Cepat | KO 빠른 가이드 |
| NL Mini handleiding | | |

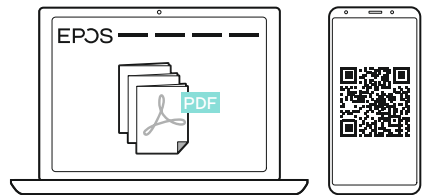
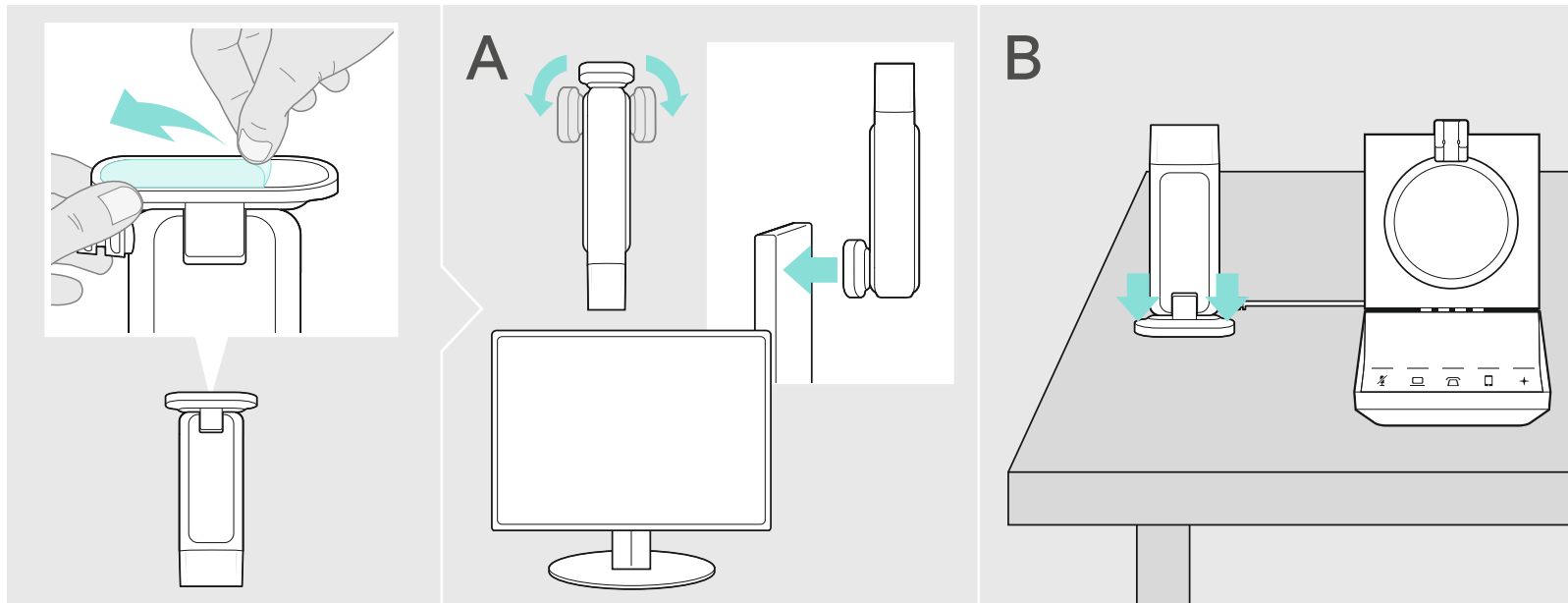
Package contents | Lieferumfang | Contenu de la boîte |
 Contenuti della confezione | Contenido del embalaje | Conteúdo da embalagem |
 Inhoud verpakking | Περιεχόμενα συσκευασίας | Pakkens inhoud |
 Innehåll i förpackningen | Pakkauksen sisältö | Zawartość opakowania |
 Содержимое упаковки | Kutunun içeriği | パッケージ内容 | Isi kemasan



Connecting the Busy light | Busy light anschließen | Connecter la Busy light |
 Connessione alla Busy light | Conexión de Busy light | Ligar o Busy light |
 De Busy light aansluiten | Σύνδεση του Busy light | Ansluta Busy light |
 Busy light in kytkeminen | Podłączenie diody zajętości | Подключение Busy light |
 Meşgul ışığı birimini bağlama | Busy light の接続 | Menghubungkan Busy light



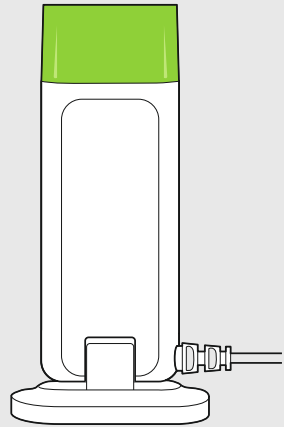
Mounting the Busy light to a desk or computer | Busy light an einem Schreibtisch oder Computer befestigen |
 Monter la Busy light sur un bureau ou un ordinateur | Installazione della Busy light su una scrivania o un computer |
 Montaje de Busy light en un escritorio u ordenador | Montar o Busy light numa secretária ou computador |
 De Busy light bevestigen aan een bureau of computer | Τοποθέτηση του Busy light σε γραφείο ή υπολογιστή |
 Montering af Busy light på et skrivebord eller en computer | Montera Busy light på ett skrivbord eller en dator |
 Busy lightin asentaminen työpöydälle tai tietokoneeseen | Mocowanie diody zajętości do biurka lub komputera |
 Установка Busy light на столе или компьютере | Meşgul ışığını masaya veya bilgisayara monte etme |
 デスクまたはコンピュータへの Busy light の取り付け | Memasang Busy light pada meja atau komputer



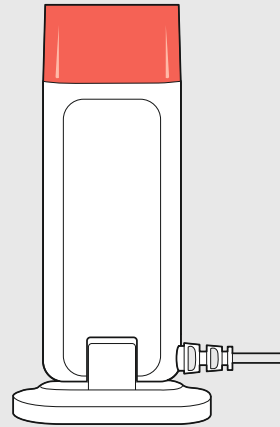
www.eposaudio.com/support

DSEA A/S
 Kongebakken 9, DK-2765 Smørum, Denmark
www.eposaudio.com

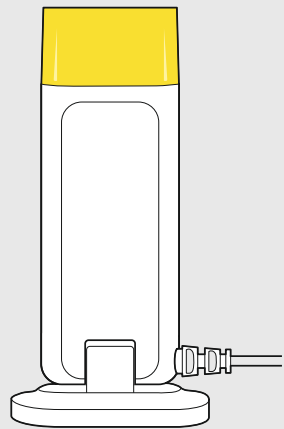
Overview of the LED indications | Übersicht der LED-Anzeigen | Aperçu des indications LED | Panoramica degli indicatori LED | Resúmen de los indicadores LED | Vista geral das indicações LED | Overzicht van de indicatielampjes | Επισκόπηση των ενδείξεων LED | Oversigt over indikatorlampens signaler | Översikt av LED-belysningen | LED-merkkivalojen yleiskatsaus | Przegląd stanów diody LED | Обзор светодиодных индикаторов | LED göstergelere genel bakış | LED 表示の概要 | Gambaran umum tentang indikasi LED



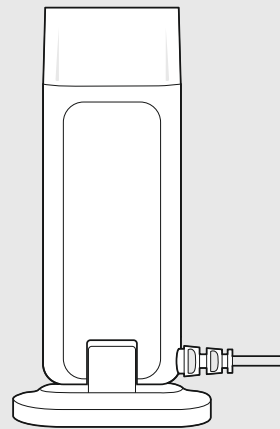
AVAILABLE



BUSY



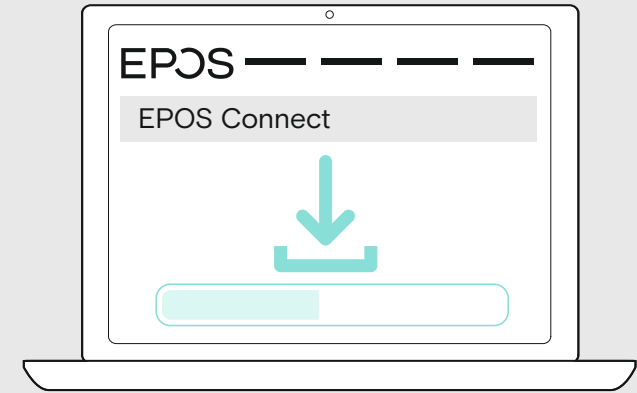
AWAY



Connected device is
switched off

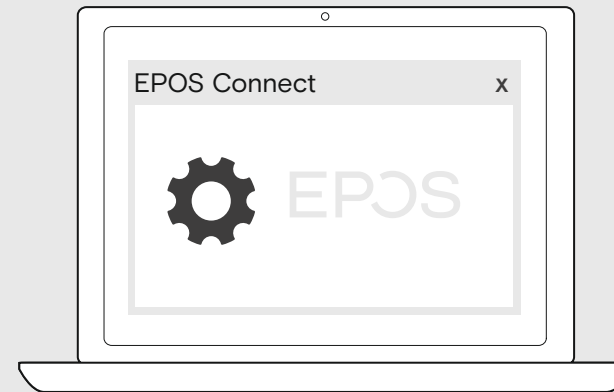
Installing the Busy light | Busy light installieren | Installer le voyant occupé (Busy light) | Installazione della Busy light | Instalación de la luz de aviso Busy light | Instalação da Luz de Ocupado | Installatie van het bezetlampje | Εγκατάσταση του Busy light | Installering af Busy light | Installera Busy light | Merkkivalon asennus | Instalowanie lampki zajętości | Установка индикатора занятого состояния | Meşgul lambasının kurulumu | ビジーランプの設置 | Menginstal Busy light

Download and install the free EPOS Connect software on your computer.



www.eposaudio.com/connect

Changing settings | Einstellungen ändern | Modification des paramètres | Modifica delle impostazioni | Modificar los ajustes | Alterar definições | Instellingen wijzigen | Αλλαγή ρυθμίσεων | Ændring af indstillinger | Ändra inställningar | Muuta asetuksia | Zmiana ustawień | Изменение настроек | Ayarların değiştirilmesi | 設定の変更 | Mengubah pengaturan



For manual configurations,
open EPOS Connect settings.
You can change for example:

- Colors
- ON/OFF
- soft phone presence
synchronization on/off